



# **SOUTH WAGGA PUBLIC SCHOOL**



## **PARENT INFORMATION BOOKLET 2019**



# Welcome to South Wagga Public School

This information booklet has been prepared to provide you with a quality understanding of the school and its programs. Our school is one where students thrive under the guidance of dedicated, professional and genuinely caring staff. We are proud of our school, proud of our students, and proud of the citizens they become. We hope you find this booklet informative and useful.

South Wagga Public School has a tradition of excellence and has served the local community since 1892 by providing a safe, secure, happy and supportive community based school.

We are fortunate in having an experienced and dedicated teaching and support staff, whose aim is to provide the best possible academic education whilst ensuring that social development, environmental, cultural and sporting endeavours are well catered for through our many and varied programs and practices.

Our priorities for the years ahead are to:

- Foster strong community partnerships to enhance and support student development.
- Build staff capabilities to create a high performing school in order to create an enriched learning environment.
- Providing a strong literacy and numeracy foundation to ensure students become successful learners.
- Use information and communication technologies to enhance all children's learning experiences.
- Continue our well-developed creative and performing arts focus through the school through drama, dance, public speaking, chess, coding club, band and stage choirs.
- Continue the tradition of strong sporting performance.

We hope your child's time at our school will be both enjoyable as well as rewarding.

Ms Tanya Whyte  
Principal



## **VISION STATEMENT**

South Wagga Public School's vision is to provide high quality inclusive educational experiences and a diverse range of opportunities for improving learning. At South Wagga Public School we aspire to successfully 'Achieve With Pride' by being respectful, responsible and connected in our interactions with others and our learning.

# School Staff

<b>Early Stage 1</b> K Koalas K Possums	Miss Georgina MacDiarmid Mrs Sandy Hodges	<b>Office</b>	Ms Tanya Whyte (Principal)
			Mrs Wendy Haran Mrs Annette Hutchinson Mrs Judy Logan Mrs Juanita Pinder Mrs Raegan Angel
<b>Stage 1</b> 1 Bilbies 1 Magpies 2 Goannas 2 Wombats	Mrs Emily Driscoll Mr Tim Harris Miss Aimee Dempsey Mr Adam Barclay	<b>Teacher Librarian</b>	Mrs Erika Crevatin Ms Susan McTackett
		<b>Release</b>	Mrs Helen Cooper (Assistant Principal) Mrs Marina Buinac
<b>Stage 2</b> 3/4 Echidnas 3/4 Kookaburras 3/4 Galahs	Ms Anthea Peterson Mr Ean Livio Miss Cassie McManus	<b>Learning and Support Teacher &amp; ESL</b>	Mrs Rebecca Pietsch (Assistant Principal)
		<b>Student Learning Support Officers</b>	Mrs Julie Hart Mrs Angela Whiting Miss Madeline Podmore Mrs Nicole Brown Miss Georgia Cox
<b>Stage 3</b> 5/6 Quokkas 5/6 Emus 5/6 Dingoes 5/6 Kangaroos	Mrs Jessica Dillon Mr Luke Brooks Mrs Corrie Shaw Mr Duncan Brodie	<b>Instructional Leader K-2</b>	Ms Angela Jenner (Assistant Principal)
		<b>School Counsellor</b>	Mrs Tarryn Lean (Tuesdays & every second Monday)
		<b>General Assistant</b>	Mr Peter Honeyman



## **General Information**

- ***Bell Times***

School Times are 9:20am – 3:20pm. The school playground is supervised from 8:50am every morning. Students who arrive at school prior to the 8:50am bell are required to sit under the COLA.

9:20 - 11:20 Morning session (2 hours)

11:20 - 12:15 Lunch (55 mins)

12:15 - 14:15 Mid session (2 hours)

14:15 - 14:35 Recess (20 mins)

14:35 - 15:20 Afternoon session (45 mins)

15:20 Dismissal

Wet weather is announced by an executive teacher if it is raining and senior class buddies go straight to their buddy classroom in addition to general supervision by the duty teachers.

- ***Car Parking and Road Safety***

Our school has limited car parking available and the car park is NOT to be used for off-loading or collecting students. Two sets of traffic lights are well placed on either side of the school to allow easy pedestrian access. The Best Street lights are supervised each afternoon. The school staff strongly discourages people from the practice of crossing Edward Street between Baylis and Best Streets.

- ***School Banking***

School banking is due to the front office by Wednesday. Any student may open a Hume Bank account for this purpose.

- ***Canteen***

Our school canteen operates on a voluntary support from our P&C committee. It aims to provide our students with healthy, nourishing food at reasonable prices. The canteen is open every school day and students order lunch before school using a paper bag. The students name, class and order should be written on the outside and money placed inside. Orders are then placed in a class container at the canteen. The 2019 menu will be sent home in Term 1 and will also be available on the school website. Parents are encouraged to volunteer to help in the canteen and this support is greatly appreciated.

- ***Fruit Break***

During the morning session students will have a short break in class to eat fruit or vegetables and drink water. Only fruit or vegetables can be eaten and should be sent ready to eat. A cup of mixed fruit salad can be purchased from the canteen before school or at fruit break.

- ***Bulletin***

The school bulletin is produced every Friday, is sent home with the eldest child in the family if requested, and is also available to download from the school website and school app. The bulletin contains news about school events, important dates to remember, education-related issues and community happenings. It is an important form of communication between the school, families, and the community.



- **Attendance**

In NSW, it is a legal requirement that students attend school every day unless they are sick or on a planned and approved holiday. If you can only arrange your family holiday during school time, you are required to inform the school principal in advance and request leave. This is because all students between the ages of six and seventeen are legally required to attend school. Attendance is recorded daily and is

taken first thing in the morning. For the benefit of all students, parents or careers should ensure their child attends school regularly. Any absence from school must be explained within 7 days of the absence. Similarly, schools are required to inform parents promptly of any unexplained absences. Please keep students at home if they are unwell. If your child happens to fall sick whilst at school, you will be promptly contacted. In the instance of a late arrival or early departure, a register must be filled. The late note required for this purpose is located in the school office.

- **Access to Staff and Parent Teacher Interviews**

We encourage contact between parents and teachers and embrace an 'open door' policy. Of course, there are times during the day when teachers are unable to talk with parents/careers because they are teaching or have other school commitments. In addition to parent/teacher interviews in Term 1, parents may make an appointment to have an interview with a teacher. To arrange this, please phone the school office or email the required teacher to organise a mutually convenient time.

- **Access/Custody of Children**

Please provide any Family Law papers when enrolling your child, particularly details of who can pick up your child.



- **School App**

We are currently in the process of modernising our school app and negotiating a cutting edge solution. Stay tuned for further information!

- **Parents and Citizens Association**

The P&C meets on the third Wednesday of each month at 7:00pm in the staffroom. All are welcome to attend. The P&C meeting is a great place to meet new parents and to receive up to date information about your child's school.

The current P&C Association Committee is represented by:

President: Mr Andrew Smith

Vice President: Mrs Fran Owen

Secretary: Mrs Kate Hardy

Treasurer: Mrs Helen Mundy

- **Library**

Each class has a weekly lesson with the Teacher-Librarian. All K-4 students must have a library bag to borrow books (please make sure they are clearly labelled with name and class). Refer to the school's website for detailed information regarding the specific number of books that can be borrowed, library opening times, parental helper opportunities and much more.

- **eCorroboree**

The eCorroboree is a digital year book that is a collation of photos from throughout the year celebrating learning and student achievement. It is available to purchase at the end of the year for a small cost.



- **Reporting and Assessment**

Each child's achievement and progress in class is assessed by their teacher(s). Teachers use a variety of ways to assess their students including observing their work in class and looking closely at the work they produce. They make assessments of their students' progress throughout the year.

Teachers will also make judgments twice a year of each student's achievement compared with the expectations described in each key learning area (KLA) syllabus. In Years 1-6, their judgments are made on a 5-point achievement scale, using A-E or the word descriptors; Outstanding, High, Sound, Limited and Basic. The written report to each child's parents provided by each school twice a year, will also include a written comment with strengths and areas for improvement.

- **Hats**

The school has a 'no hat, play in the shade' policy. Children without school hats will not be allowed to play in the playground areas due to the risk of excessive sun exposure. Children without school hats will be required to sit in a shaded area during playtime.

- **Home Learning**

Kindergarten children will not be expected to complete written home learning, however, you will be asked to read to your child and hear them read.

In Years 1 and 2 some formal home learning is set. For example, students may be asked to complete maths home learning based on recently taught concepts and required to practice their spelling words. Home learning in Years 3-6 will be varied and students will be expected to work more independently, however, teachers will still provide guidance and assistance to students having difficulties completing their home learning. In addition to the above, all students have their Mathletics passwords and are able to access this at home.

- **Immunisation**

The NSW Department of Health recommends that all children entering school be fully immunised. Your child will be in contact with many other children and infections spread easily in these circumstances. Any unimmunised students may need to be excluded from school during periods of contagious infections. Under the NSW Public Health Act 2010, children without proof of immunisation may be asked by Public Health Officials to stay at home during an outbreak of vaccine preventable disease. (For more information refer to the 'Health' section at the end of this booklet)

- **Labelling of Clothing and Personal Belongings**

Please make sure that all your children's clothing and personal belongings are clearly marked with the child's name. This helps us to return lost property. The lost property box is located outside Mr Ean Livio's classroom.

- **Late Arrivals**

Children arriving late (after the 9:20am bell) must be signed in by an adult to get a late arrival slip from the office for their class teacher.

- **Leaving the School During the Day**

If students have to leave the school during the day for an appointment or other reasons, the parent must sign out the student prior to collecting their child from the class. The parent will be given a slip to hand to the teacher. When the child returns they must be signed in at the Office. The student will then be given a slip to hand to their teacher.

- **Money Collection**

Money for excursions and other events should be sent to school in a sealed envelope with the child's name, class, reason for money and amount. The school accepts cheques and has an online payment system with a link from the school website.

- **School Counsellor**

School counsellors are experienced teachers who are also psychologists. They have been specially trained to diagnose, assess and assist teachers, parents and children in order to overcome problems encountered at school. Such problems may be with behavior, learning or social and psychological development. Parents are contacted before a child sees the school counsellor. Also parents or caregivers may make an appointment to discuss matters of concern with the school counsellor.

- **School Learning Support Officers**

These teachers help students with additional learning needs. They work with regular classroom teachers and they also help students to be more confident and independent in their learning.

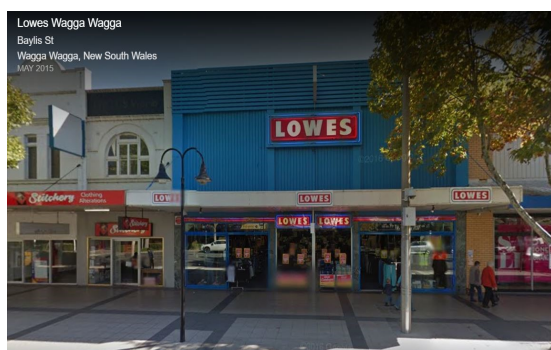
- **Voluntary School Contributions**

Each year a large amount of money is spent on equipment, teaching aids, resources etc. essential to the effective education of your child. Some of the money is supplied through government grants, some through P&C funds and some through voluntary school contributions. You will be informed of the amount of the voluntary contribution at the start of the school year. In addition, schools may charge students for the purchase of materials used in particular subjects.

- **School Uniform**

We expect all students to wear the correct uniform at school, during school functions and on excursions. By wearing our uniform, students take a greater pride in their appearance and their identity with the school. When purchasing uniforms, keep in mind that the 2nd hand uniform shop is located in the school gym and is open every Thursday between 3-3:45am. Proceeds from the uniform shop go to the South Wagga P&C. Uniforms and other associated items are also available from Lowes.

**DETAILS OF OUR SCHOOL UNIFORM FOR 2019 ARE OUTLINED ON THE FOLLOWING PAGE**





### **Basic Girls Uniform for all Classes**

Navy shorts (standard or long leg design without piping or logos)  
Lemon shirt (long sleeves under tunic)  
Lemon skivvy (winter)  
Lemon or navy ankle length socks  
SWPS navy polo or 125 navy polo  
Black shoes (black or brown sandals in summer)  
Navy trousers or track pants (winter)  
Navy sloppy joe or jumper  
Navy beanie (winter)  
Sun safe hat (compulsory in Terms 1 and 4)  
Blue tartan tunic (winter)  
Blue check dress (summer)  
School spray jacket

### **Basic Boys Uniform for all Classes**

Navy shorts (standard or long leg design without piping or logos)  
Lemon shirt (long or short sleeves)  
Lemon skivvy (winter)  
Lemon or navy ankle length socks  
SWPS navy polo or 125 navy polo  
Black shoes (black or brown sandals in summer)  
Navy trousers or track pants (winter)  
Navy sloppy joe or jumper  
Navy beanie (winter)  
Sun safe hat (compulsory Terms 1 and 4)  
School spray jacket

### **Girls Sports Uniform for Years 3-6**

Navy shorts (plain colour without piping)  
SWPS navy polo  
White ankle length sports socks  
Sports shoes predominately white in colour  
Navy skirt

### **Boys Sports Uniform for Years 3-6**

Navy shorts (plain colour without piping)  
SWPS navy polo  
White ankle length sports socks  
Sport shoes predominately white in colour

### **2017 Commemorative 125 Year Anniversary polo shirts**

The polo can be worn every day by K-6 students except for sports days.



## Other Programs

- ***Band and Choir***

Children who have private music lessons have the opportunity to join the school band. In addition, children have the opportunity to join their stage choir. Each choir and the school band perform at different events throughout the school year including the Education Week celebrations at the Market Place, the Wagga Eisteddfod at Charles Sturt University and other prestigious events.

- ***Drama Lamas***

Students unleash their creative flair during lunchtime drama lessons with Mr Harris which encourage active participation, collaborative communication and expressive skills. In 2015, the Drama Lamas won the NSW Landcare Award which engaged the students in the concept of sustainability through drama.

- ***Intensive Swimming Lessons and Water Safety Program***

Each stage participates in weekly graded swimming lessons for a period of 8 weeks out of a term. Lessons are conducted on a Friday morning at the Oasis swimming complex in Morgan Street. Swimming Education is a prescribed strand in the current Personal Development, Health and Physical Education curriculum.

- ***Gymnastics Program***

Ben Sharp and his team of instructors from Little Champions, run the 8 weeks gymnastics program. Each stage participates in lessons during a different term throughout the year. Gymnastics is a prescribed strand in the current Personal Development, Health and Physical Education curriculum.

- ***Footsteps Dance Program***

All students participate in the Footsteps Dance Program during Term 3 with the highlight being an after school disco. The Dance Program is a prescribed strand in the current Personal Development, Health and Physical Education curriculum.

- ***Kindergarten Orientation***

The first round of Kindergarten Orientation afternoons will be held in early Term 4. Our aim is to allow Kindergarten students the opportunity to experience 'big school' in an informal, supportive and caring environment. This will be a wonderful opportunity to meet their Year 6 buddy for the first time and for the staff to get to know each child. They will spend the afternoon in the Kindergarten classrooms where they will do some structured play and activities to see what school is like. In addition to the Kindergarten Orientation Program, the school offers an information session for Kindergarten parent in Term 4 of each year.

- ***Buddy Program***

A Buddy Program operates between Kindergarten and Year 6 students to help Kindergarten students to settle into school. Kindergarten students will be carefully matched with their buddy for the Kindergarten orientation process in Term 4 of the year before they commence school.

- ***Student Parliament***

Student Parliament is a group of students in a school elected by their fellow students to represent all students in the school and who organise ways for students to participate in school life. Student Parliament work democratically to represent the student body in school decision making. Students work together, with help from staff members, to improve school life and to contribute students' ideas.

- **Religious Education**

Religious Education is offered in the form of both Catholic scripture K-6, SRE non-denominational K-2 and Stage 2 lessons, which are held on a Friday afternoon. The following website outlines the authorized Catholic curricular: <https://www.wagga.catholic.org.au/default.aspx?d=5089622> and the SRE non-denominational scripture at <http://godspace.org.au>.

- **Chess**

Chess is available to Stage 2 and 3 students on Friday afternoons. They compete in a competition with students from other schools and have opportunities to participate in other competitions throughout the year.

- **Coding Club**

The Coding Club is available to Stage 2 and Stage 3 students once a week and utilizes online software to develop computation thinking skills. The skills and opportunities offered during the Coding Club are inline with Science and Technology curriculum.







# NSW Department of Education Calendar 2019

January							February							March						
S	M	T	W	T	F	S	S	M	T	W	T	F	S	S	M	T	W	T	F	S
		1	2	3	4	5						1	2	31						
6	7	8	9	10	11	12	3	4	5	6	7	8	9	3	4	5	6	7	8	9
13	14	15	16	17	18	19	10	11	12	13	14	15	16	10	11	12	13	14	15	16
20	21	22	23	24	25	26	17	18	19	20	21	22	23	17	18	19	20	21	22	23
27	28	29	30	31			24	25	26	27	28			24	25	26	27	28	29	30

April							May							June						
S	M	T	W	T	F	S	S	M	T	W	T	F	S	S	M	T	W	T	F	S
1	2	3	4	5	6		1	2	3	4				30						1
7	8	9	10	11	12	13	5	6	7	8	9	10	11	2	3	4	5	6	7	8
14	15	16	17	18	19	20	12	13	14	15	16	17	18	9	10	11	12	13	14	15
21	22	23	24	25	26	27	19	20	21	22	23	24	25	16	17	18	19	20	21	22
28	29	30					26	27	28	29	30	31		23	24	25	26	27	28	29

July							August							September						
S	M	T	W	T	F	S	S	M	T	W	T	F	S	S	M	T	W	T	F	S
1	2	3	4	5	6		1	2	3					1	2	3	4	5	6	7
7	8	9	10	11	12	13	4	5	6	7	8	9	10	8	9	10	11	12	13	14
14	15	16	17	18	19	20	11	12	13	14	15	16	17	15	16	17	18	19	20	21
21	22	23	24	25	26	27	18	19	20	21	22	23	24	22	23	24	25	26	27	28
28	29	30	31				25	26	27	28	29	30	31	29	30					

October							November							December						
S	M	T	W	T	F	S	S	M	T	W	T	F	S	S	M	T	W	T	F	S
1	2	3	4	5	6		1	2	3	4	5	6	7	1	2	3	4	5	6	7
7	8	9	10	11	12	13	3	4	5	6	7	8	9	8	9	10	11	12	13	14
14	15	16	17	18	19	20	10	11	12	13	14	15	16	15	16	17	18	19	20	21
21	22	23	24	25	26	27	17	18	19	20	21	22	23	22	23	24	25	26	27	28
28	29	30	31				24	25	26	27	28	29	30	29	30	31				

## Key dates

- Term start and end dates for students\***
  - Term 1 – 30 Jan to 12 Apr 2019
  - Western division – Term 1 – 6 Feb to 12 Apr 2019
  - Term 2 – 30 Apr to 5 Jul 2019
  - Term 3 – 23 Jul to 27 Sept 2019
  - Term 4 – 14 Oct to 18 Dec 2019
- School development days\***
  - Eastern division – 29 Jan 2019
  - Western division – 5 Feb 2019
  - All schools – 29 Apr, 22 Jul, 19 Dec, 20 Dec 2019
- School holiday dates 2019**
  - Summer – 24 Dec 2018 to 28 Jan 2019
  - Autumn – 15 Apr to 26 Apr 2019
  - Winter – 8 Jul to 19 Jul 2019
  - Spring – 30 Sept to 11 Oct 2019
  - Summer – 23 Dec 2019 to 27 Jan 2020
- Western division – additional holiday dates**
  - Summer – 29 Jan to 4 Feb 2019
- Education Week**
  - 5 Aug to 9 Aug 2019
- Exam dates**
  - Selective high school placement test – 14 Mar 2019
  - NAPLAN paper test – 14 May to 16 May 2019
  - NAPLAN online test window – 14 May to 24 May 2019
  - Opportunity class placement test – 31 Jul 2019
  - HSC written examinations – 17 Oct to 12 Nov 2019
- Public holidays**

\*Check with your local school as some dates may change.  
Note: School zone speed limits apply on all school days, including school development days.

**Get connected:** Follow us on Twitter @NSWEducation | Follow us on Facebook @NSWDepartmentofEducation

Visit [education.nsw.gov.au/calendars](http://education.nsw.gov.au/calendars) for more details.

## Health Medications

In compliance with the NSW Department of Education and Training, medication must be presented to the office in its original packaging to be dispensed by a School Administrative Officer. All medication given is recorded in the school's medical register.

Children with asthma should have an asthma plan, which must be given to the school. Children who have been diagnosed at risk of anaphylaxis will have an individual health care plan formulated by school in consultation with parents and their doctor. The school will contact you if either of these applies.

During the time your child is at school he/she may contract one or more of the infectious diseases common in children. Most of these can be easily passed onto other children so the Department of Education and Communities has rules about excluding children from school until they are better. Below are some of the most common. For exclusion periods of other diseases please contact your doctor.

**Please advise the office immediately if your child is diagnosed with any of the infectious diseases.**

<b>Infectious Diseases in Children</b>	<b>Exclusion time from school</b>
--	-----------------------------------

Chicken Pox

For five days after the first spots appear.

Glandular Fever

It is not important to keep your child away from school from the point of view of infection but some children with Glandular Fever are too sick to attend school.

Infectious Hepatitis

Until the child has recovered, and from the first signs of jaundice.

Viral Hepatitis Type A

Five days from the appearance of rash. Until the child has fully recovered, and for one week after the appearance of the swelling.

Measles

Minimum exclusion – 4 days after rash appears. Contact not excluded.

Mumps

Exclude until fully recovered. Contact not excluded.

Rubella (German Measles)

Until fully recovered, and for at least 6 days after the rash appears. (not to be confused with Measles)

Whooping Cough

If the child has not received any antibiotic treatment then the child should be kept away from school for 3 weeks from the onset of the "Whoop". If appropriate antibiotic treatment is given the child only needs to be kept away from school for 5 days from the onset of Erythromycin therapy.

Parvovirus B19

Whilst rash, inflammation and fever are present.



## Contagious Skin Conditions

### Impetigo (Scabby Sores)

Your family doctor should be consulted. If the sores are being treated and are properly covered by a clean dressing, children are allowed to attend school. If they are not covered and are on exposed parts of the body such as scalp, hands or legs, the child should be kept home until sores have healed.

### Pediculosis (Head Lice)

Until appropriate treatment is begun

### Ring Worm

Until appropriate treatment is begun

### Scabies (The Itch)

Until appropriate treatment is begun

It is often very difficult to decide if your child is too sick to go to school or not. We do not have the facilities to look after sick children for any length of time. If need be the parent will be contacted and the child can be taken home.





## CONTACT DETAILS

Address: 140 Edward Street Wagga Wagga 2650

Phone: (02) 69212947

Fax: (02) 69218746

This document and other information is  
also available on our website.

Website: <http://www.southwagga-p.schools.nsw.edu.au/>

Email: [southwagga-p.school@det.nsw.edu.au](mailto:southwagga-p.school@det.nsw.edu.au)

Further information for parents is available at: <http://www.schoolatoz.nsw.edu.au/>